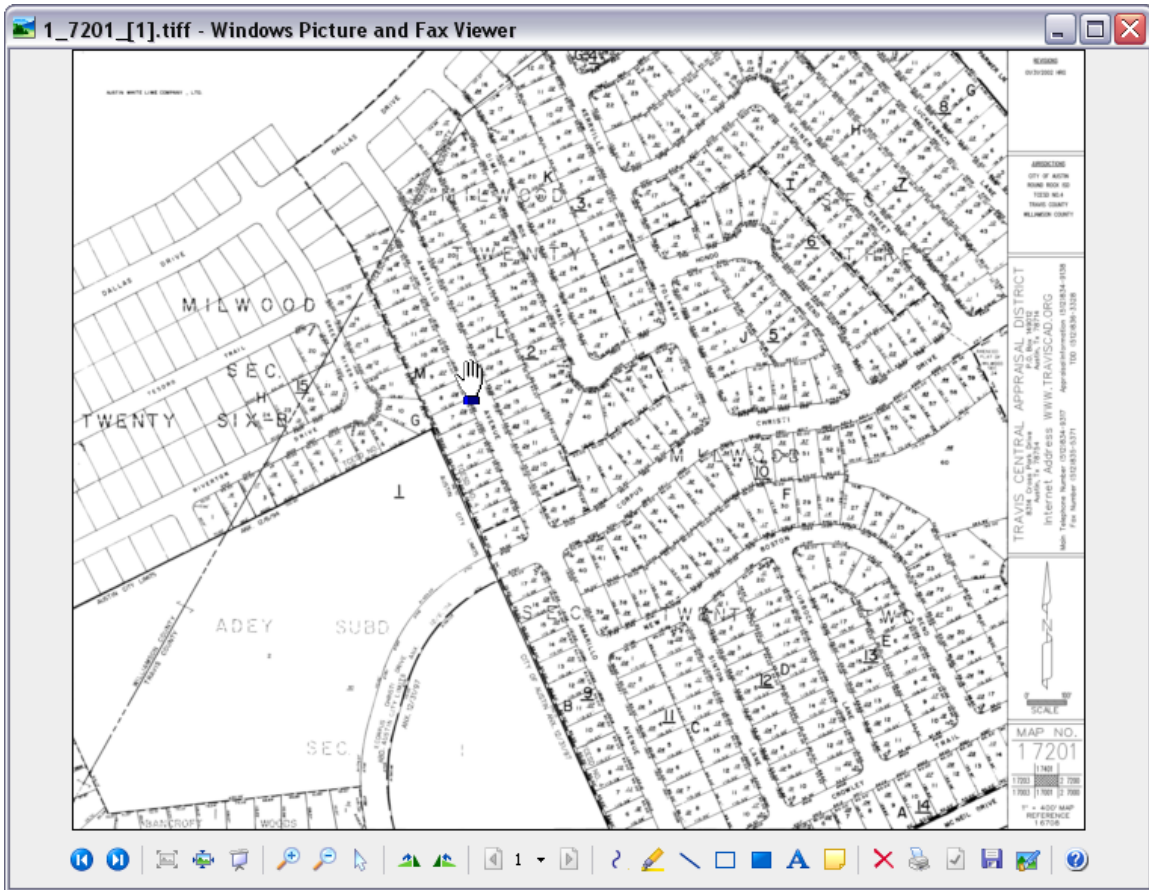
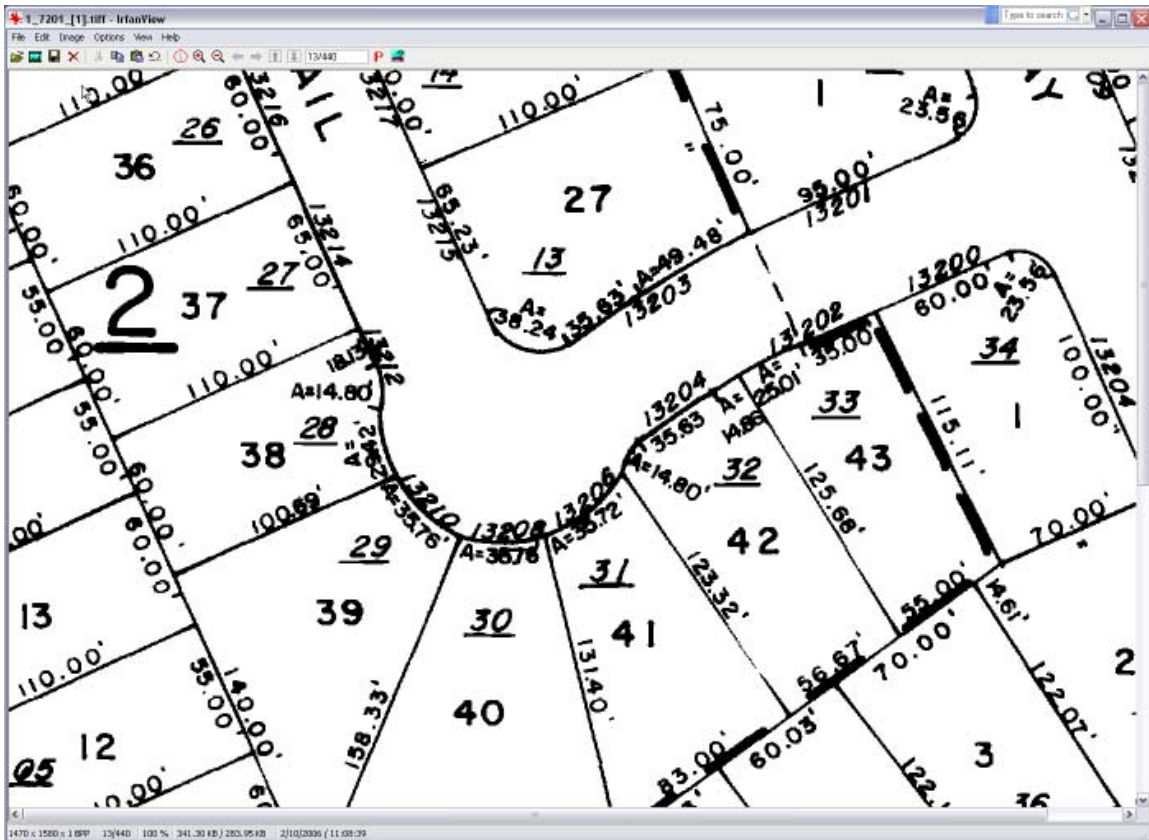


This is how the County Appraisal District tax maps appear when downloaded from the website:



This is how the County Appraisal District tax maps can appear when opened through Irfanview:



What is IrfanView?

IrfanView is a program that allows you to view and manipulate graphics files.

Why would I want to use this program with REAL-COMP information?

1. You can look up a tax record through [REAL-COMP InfoSearch](#), click on the 'maps' link to instantly access the CAD tax map for that property. These maps are very condensed and often difficult to read. When you have IrfanView loaded on your computer, you can view that map through IrfanView software and thereby zoom in on the portion you want to see enlarged and view it clearly.
2. You can also, crop and print, etc. to make the map of a good quality to print out, so that it may be included in a file with other property information printouts.

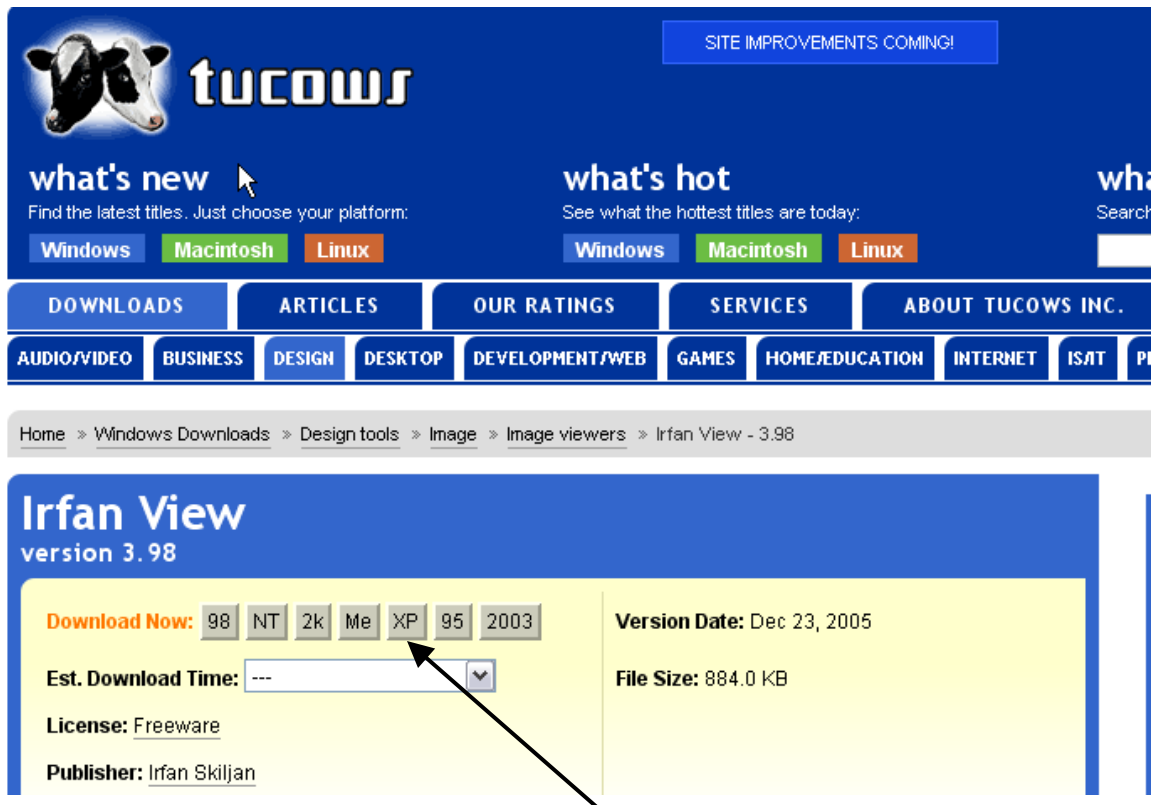
How do I get a copy of Irfanview?

Irfanview is free software for personal use. The publisher requests that if you intend to use this software for other than personal viewing, that you pay a \$12 license fee. The information about how to secure a license for Irfanview is available at: <http://www.irfanview.com/>.

Irfanview can be downloaded from the following link: <http://www.tucows.com/preview/194967>

Download Instructions:

1. At the first screen, click once on the button to indicate which Windows version you are using. We will select XP for this example.



2. Next you will be asked to choose a download location that is nearest to you, in order to speed the download process. Click once on your choice.

choose download location

You have chosen to download the following file:

Irfan View

Version: 3.98
Platforms: 98, NT, 2k, Me, XP, 95, 2003
File Name: IView398.exe
File Size: 884.0 KB (905,216 bytes)
MD5 Hash: 5Bcdf161da97ed5d7395791eed200cc7 [WHAT IS THIS?](#)

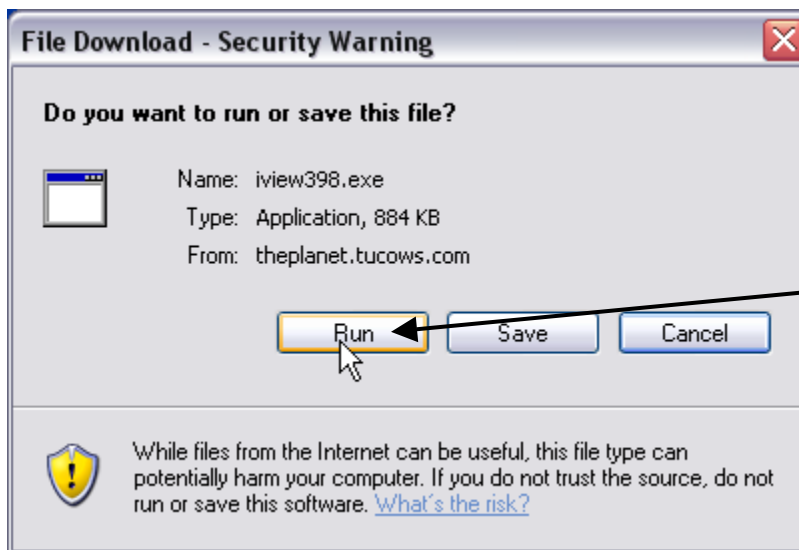
In order to make the download process as fast for you as possible, this file exists in several Tucows download servers around the world. Please choose the location closest to you from which to download the file.

We have automatically detected that the following locations are close to you, or that you have downloaded from one of these locations before:

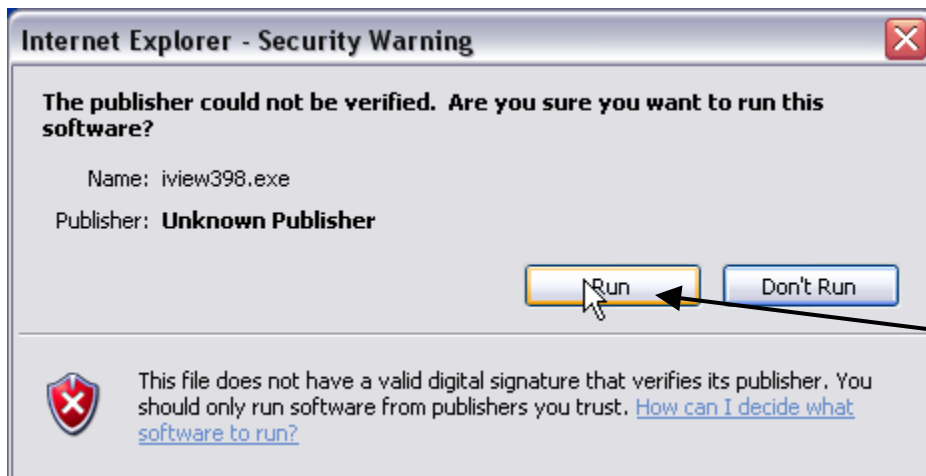
 **U.S.A.**

- > **Mid America ISP, Inc.** *Marshalltown, IA*
- > **The Planet** *Dallas, TX*
- > **WhiteHorse Communications, Inc.** *El Paso, TX*

3. You will see a small window appear with a security warning asking if you wish to run the file, save the file or cancel. Click on 'run' one time.



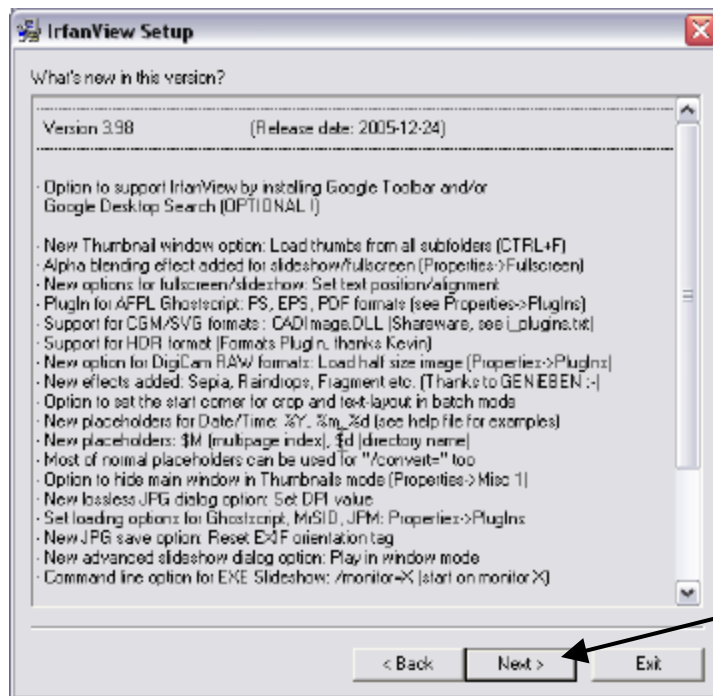
4. You may then get a small window that says the publisher is unknown and giving you another opportunity to 'run' or 'don't run' the file.



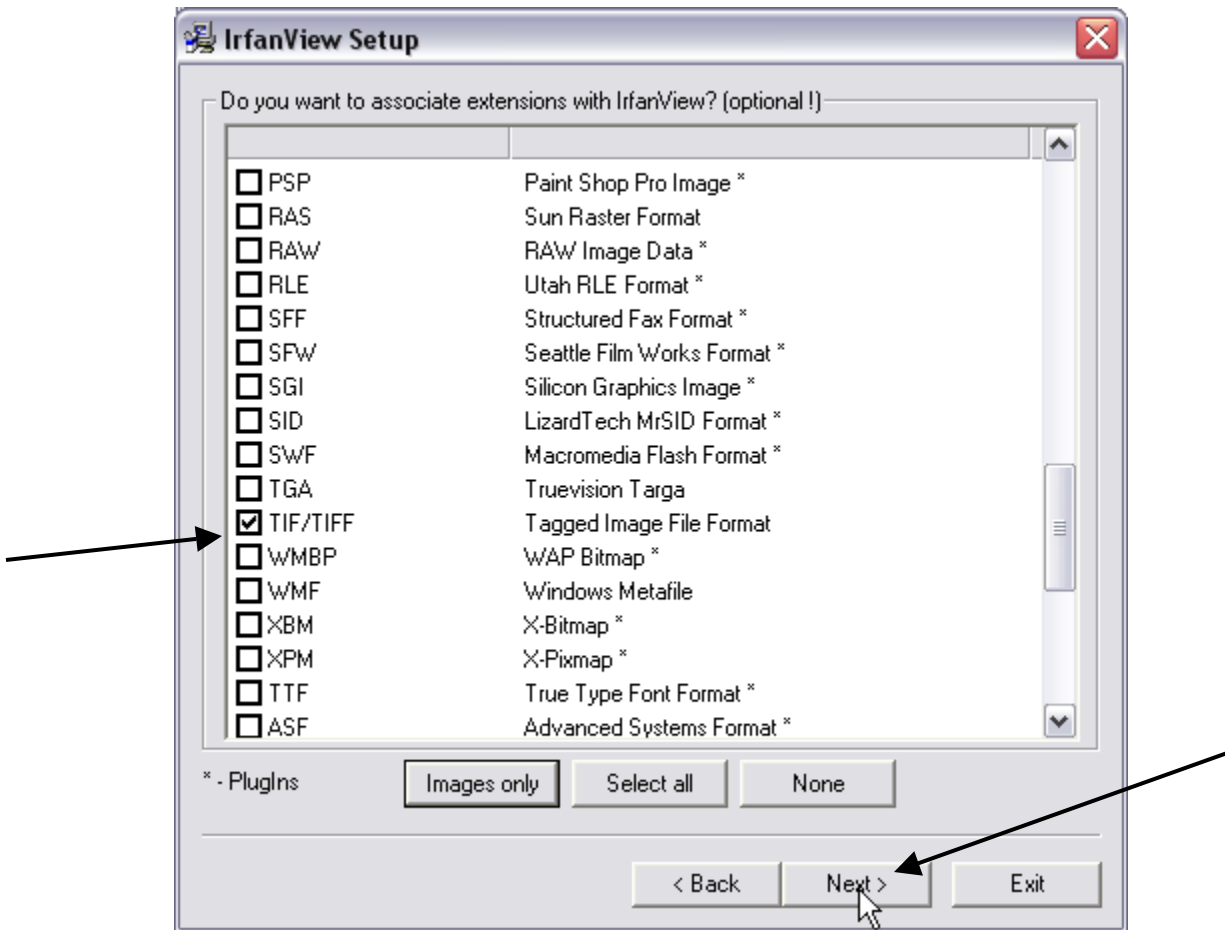
5. After you select 'run' a window will open that says IrfanView Setup. Click 'next' one time.



6. The next window will give you technical info about this version of the IrfanView product. Click next one time.



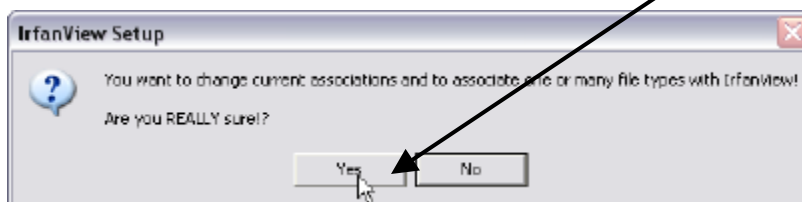
7. The next window will ask if you wish to associate any file extensions to automatically open up in IrfanView mode. Scroll down to select the box to the left of TIF/TIFF. This process will cause any file with the .tiff or .tif extension (which includes that CAD tax maps) to automatically open in IrfanView format. After you click the button for TIF/TIFF, then click the 'next' button at the bottom of the window. (See example next page)



8. The next window will tell you that you are ready to install the program. Click 'next' one time.



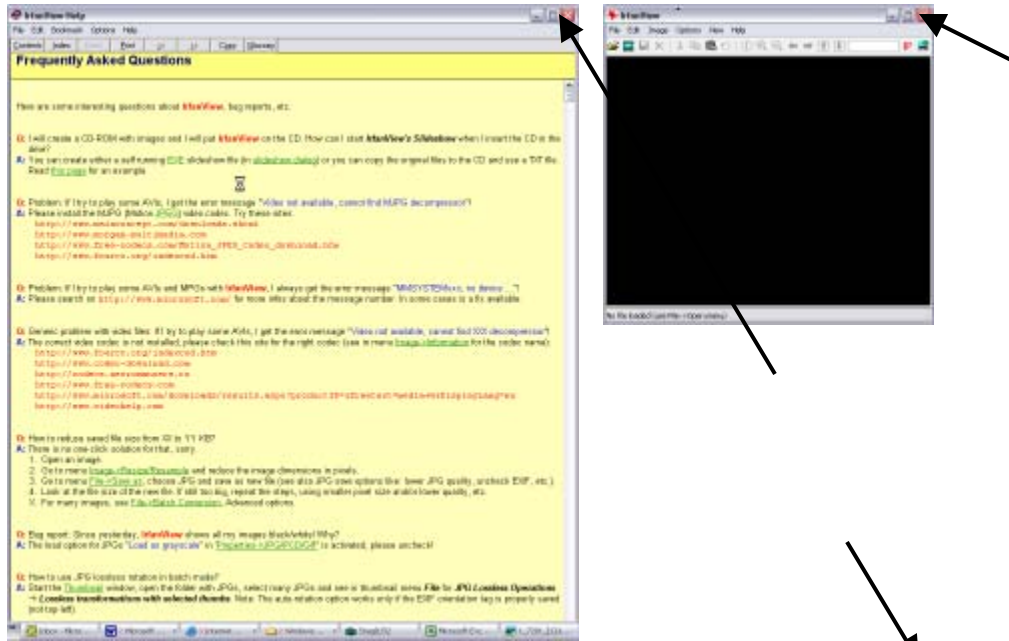
9. The next window will warn you that you selected a file extension to be opened in IrfanView and will give you a chance to change your mind. If you find that you do not want all .tiff or .tif files to automatically open in IrfanView, it is easy to go back and change this configuration. Click 'yes' one time to proceed.



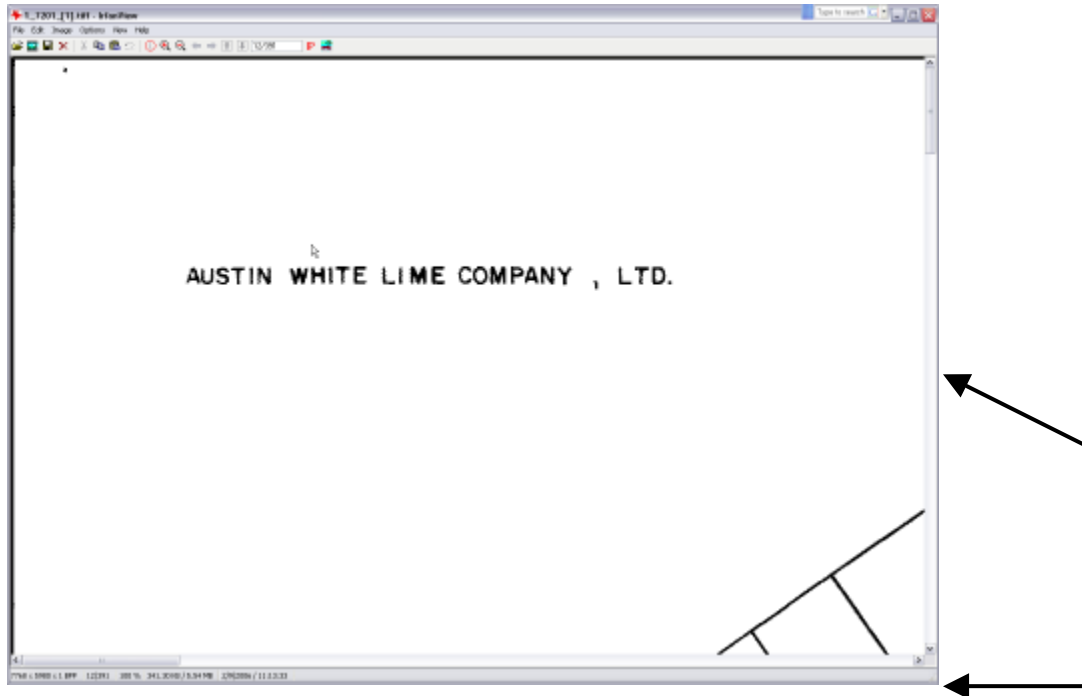
10. You should now see a window that says you have successfully completed the installation process. Click 'done' one time.



11. Next two windows will open, one small one with a black square and one with FAQ's about IrfanView. Close both of these windows by clicking on the red X in the top right of each window. You can also close the window that is open to the Tucows website.



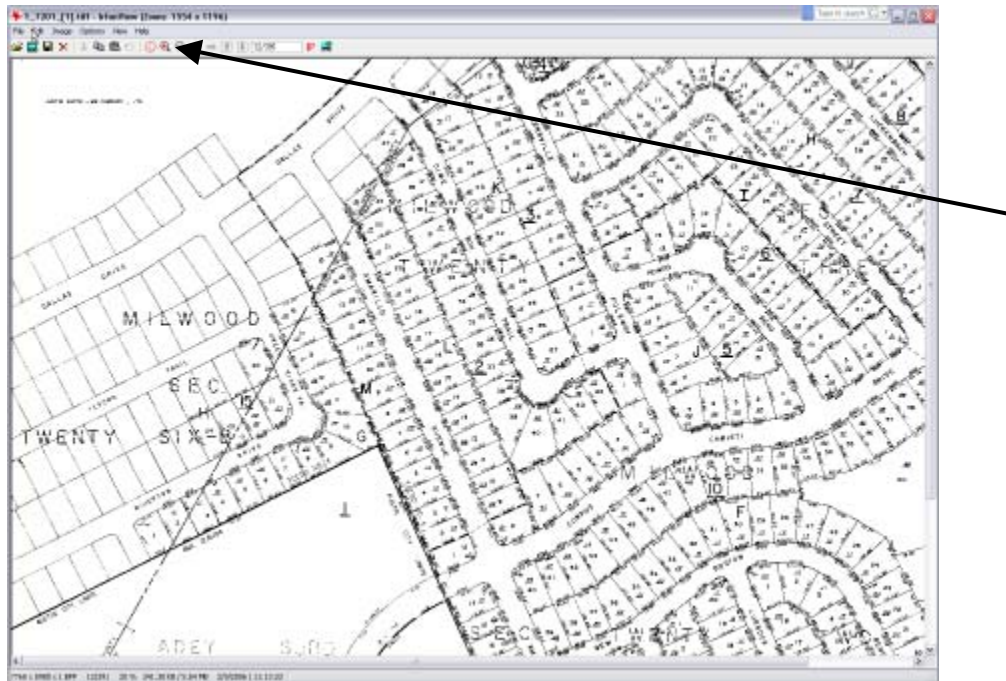
12. Now, when you are in [REAL-COMP](#) InfoSearch and you click on the 'maps' button and select CAD tax maps, the map will automatically open in IrfanView instead of the previous 'Windows picture and fax viewer'.



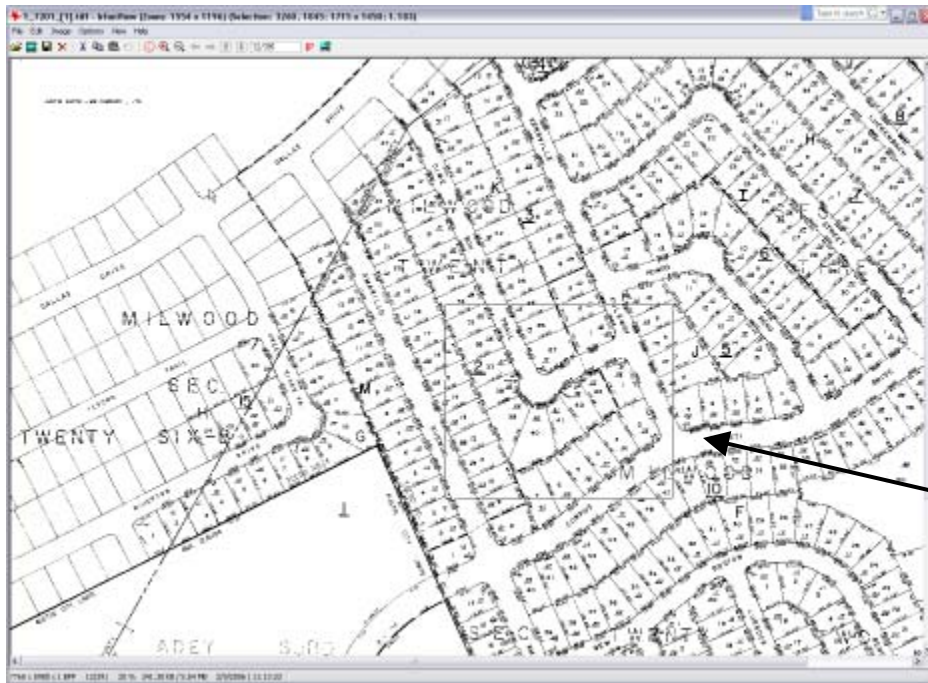
13. You can use the scroll bars on the right side and bottom of the window to navigate to the portion of the map you want to see.

How do I enlarge and print the portion of the map relating to my search?

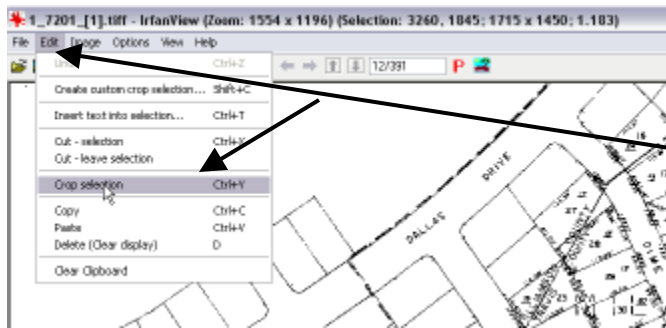
1. Click on the 'Zoom Out' button a few times so that you can locate the portion of the map you wish to highlight.



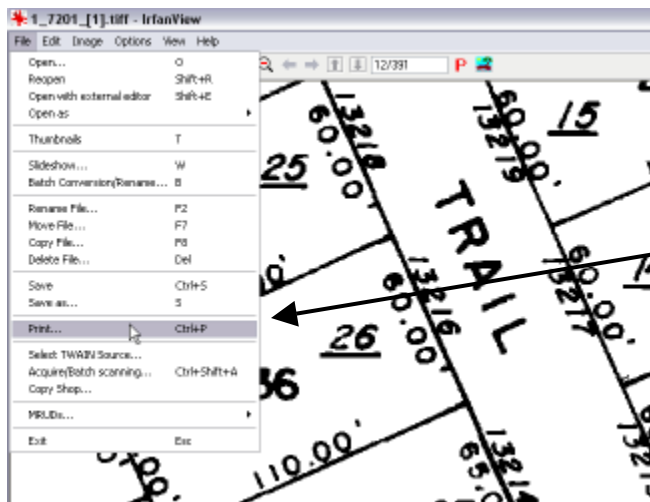
2. While viewing the map through IrfanView, slide the mouse cursor to the top left of the portion of the map you wish to see. Hold down the left mouse button and drag the mouse toward you, creating a box around the section you want.



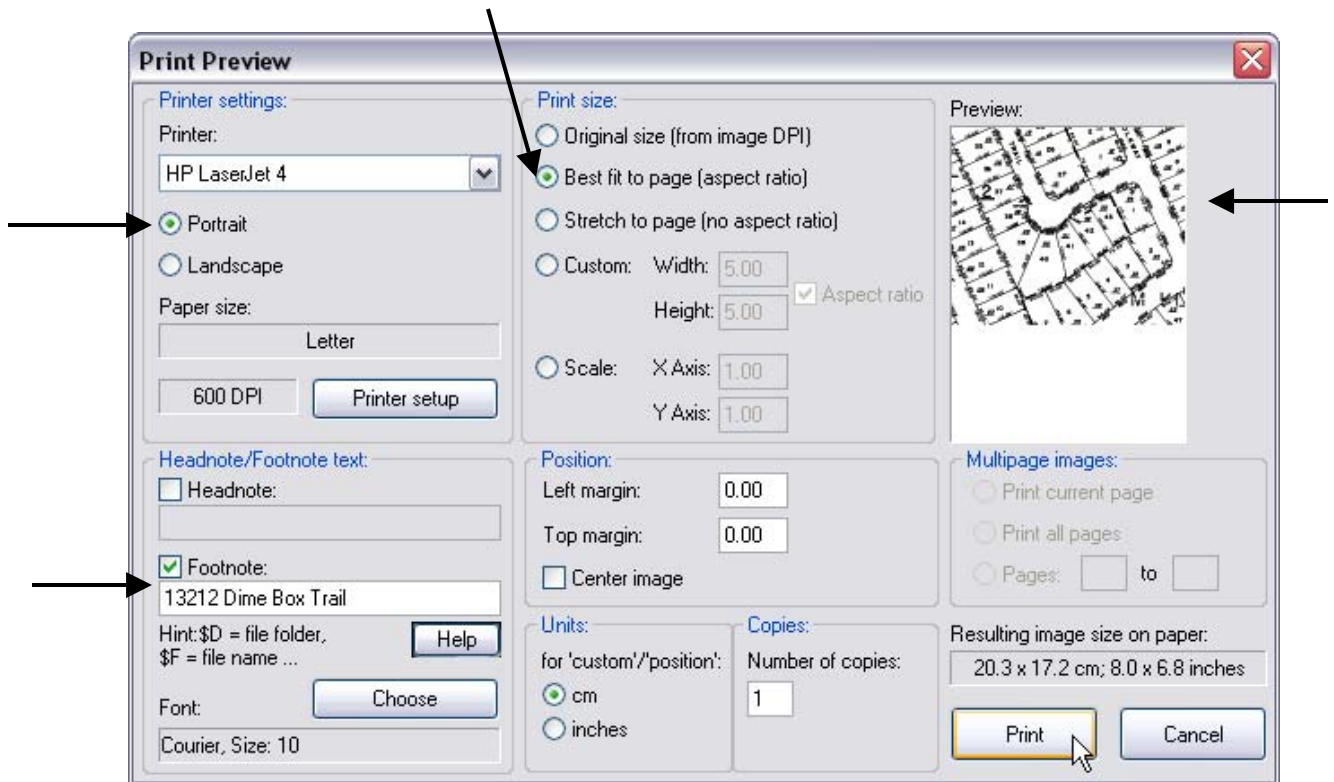
- At the top of the screen, click on the 'Edit' menu and choose 'Crop Selection'. This will leave only the portion of the map that you have selected on the page.



- Next choose the 'File' menu and select 'Print'.



- Now you will see a screen that will allow you to prepare the page for printing:



From this screen we have selected 'Portrait' orientation and 'Best fit to page (aspect ratio)'. The top right hand corner shows a preview of how the map will look on the printed page. At the lower left hand corner of the window, we have selected to add a Footnote by checking that box and typing in the address we are preparing the map for. Now the address will appear at the bottom of the page when printed.

When you have completed your selections, click once on 'Print'.